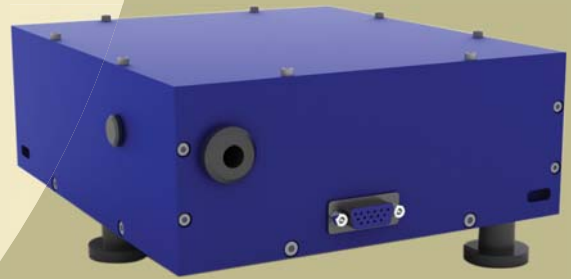




### Tourmaline Fiber Laser

- 1  $\mu\text{m}$  wavelength
- Small footprint
- Turn-key operation
- Highly stable

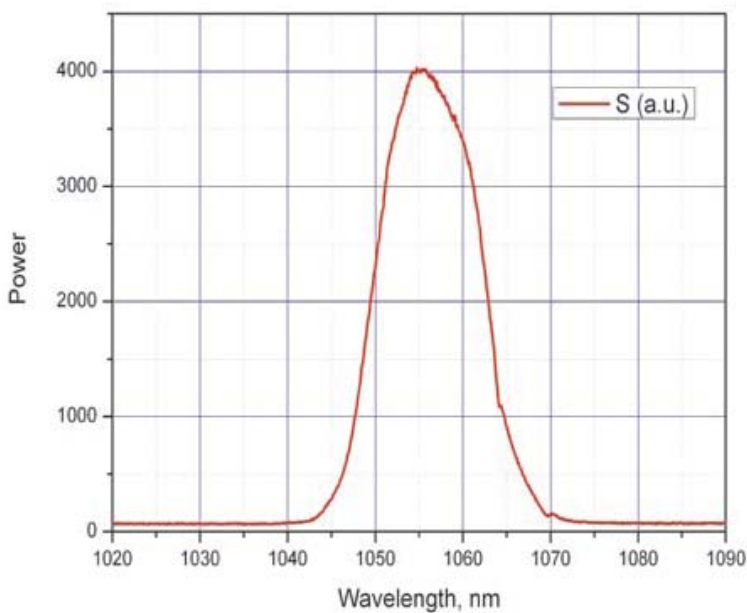


Tourmaline Yb-doped fiber laser system

### Tourmaline technical specifications

	Tourmaline-2	Tourmaline-40	Tourmaline-150
Pulse duration (FWHM), fs		<150	
Wavelength, nm		1054 $\pm$ 1*	
Average output power, mW	>2	>40	>150
Peak power, kW	>0,1	>2	>10
Repetition rate, MHz		60-80**	
Optical unit, mm		200x200x70	200x200x100
Power supply unit, mm		230x200x90	230x200x130

\* - other wlengths are available - 1030, 1040 and 1065 nm  
 \*\* - according to customer's request



Typical spectrum of the Tourmaline laser system

### Possible application of the Tourmaline fiber lasers:

- Seed oscillator
- THz radiation generation
- MPE microscopy
- Metrology
- «Pump-probe» spectroscopy
- Semiconductor device testing
- Supercontinuum generation
- Optical coherent tomography